

NEW NORMAL COLLEGE OF MUSIC MAHIDOL UNIVERSITY

Booklet 2:
(Pre-College) Young Artist
Music Program – YAMP

All of this information and
more is available
[@www.music.mahidol.ac.th/covid-19](http://www.music.mahidol.ac.th/covid-19)

Section A:

Mahidol 5



มหาวิทยาลัยมหิดล
Ministry of Health

COVID-19

MU New Normal

Measures for Office Buildings



Entry-Exit



Cleanliness and Safety



Confirmed Case

5 Measures for building entry and exit



Visitors/staff must wear cloth or surgical masks at all times.



Go through body temperature checking point before entering the building. Visitors and staff should stick the pass sticker after undergoing the temperature checking. Person with body temperature higher than 37.5°C is not allowed to enter the building.



Use alcohol gel at service points for hand sanitizing.



Register by scanning the QR code before entering and exiting the building or register at a screening point provided.



Practice social distancing according to the building's measures.

5 Measures for the cleanliness and safety in the building



Staff, students, cleaning personnel, security guards and visitors must wear cloth or surgical masks at all times.



Conduct body temperature checking at the main entrance of the building. Visitors/staffs should stick the pass stickers after undergoing the temperature checking.



Provide alcohol gel throughout the building.



Clean public space every 2 hours and set a good ventilation system in the place.



Visitors/staff should practice social distancing to reduce congestion.

5 Measures when there is confirmed case in the building



Directors of divisions/centers need to immediately notify responsible Vice President on suspected/confirmed cases. The building will be closed for 3 days.



Separate risk groups to undergo screening tests.



Transfer confirmed cases and close contact person to Mahidol University-affiliated hospitals for screening and treatment.



Publicize and report the situation to the Provincial Public Health Office within 3 hours.



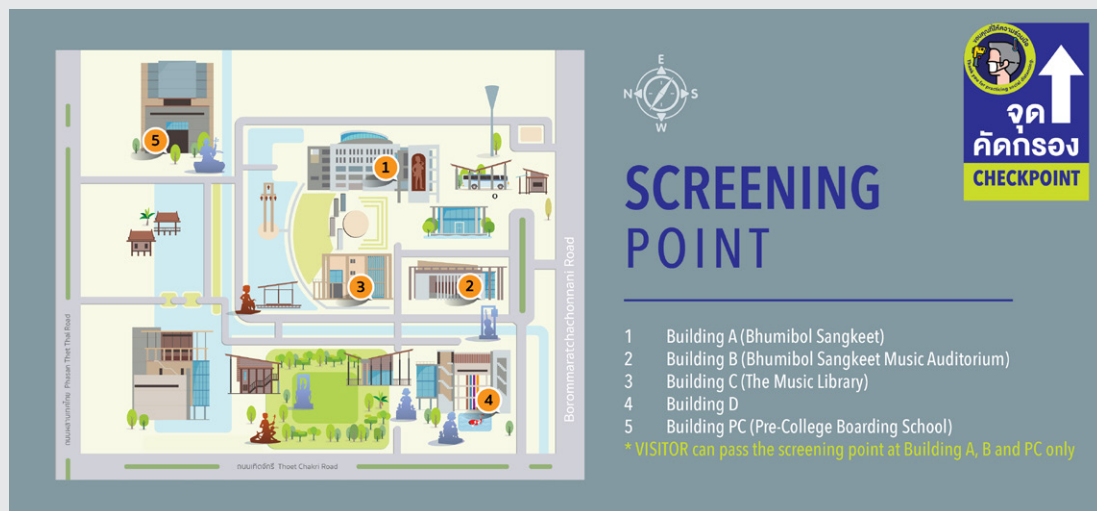
Clean the area where confirmed cases touched and other areas in the building.

Design : Corporate Communication / Information : Risk Management Center Mahidol University

Section B:

College-wide preventive measures and information

B1: Checkpoint and Screening



B2: General Advice about coming to College and preventive measures at College

General Advice before coming and at College

1. Follow guidelines and regulations published by MU, provincial and national governments
2. Have you own masks, and a bag and or mask necktie to be kept on your person or in your bags during eating. (Do not put masks on any surfaces)
3. Have you own hand-gel/spray.
4. If you feel unwell call your supervisor and if any of the symptoms for COVID-19 we will follow MU system (See infographic below)
5. Avoid touching eyes, mouth and nose
6. Avoid to sharing your personal belonging with other people
7. Rooms will be clearly marked when there is a limitation of the number of people in that room
8. Wash your hands before and after class, eating, taking mask off and on, as often as possible and for 20 seconds at least each time. (See Infographic – 7 steps washing hands)

INSERT INFOGRAPHICS:
(Can make a short but easy to read)

Step-1



Rub palms together

Step-2



Rub the back
of both hands

Step-3



Interlace fingers
and rub the
hands together.

Step-4



Interlock fingers and
rub the back of fingers
of both hands

Step-5



Rub thumb in a rotating manner
followed by the area between
index finger & thumb.

Step-6



Rub fingertips
on palm for both hands

Step-7



Rub both wrists in
a rotating manner
rinse and dry thoroughly.

7 STEPS OF HAND WASHING



Scrub your hands for at least 20 seconds. If soap and water are not readily available, you can use an alcohol-based hand sanitizer that contains at least 70% alcohol.



1 Rub your palms together.



2 Rub the back of each hand.



3 Rub both your hands while interlocking your fingers.



4 Rub the back of your fingers.



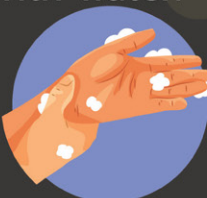
5 Rub the tips of your fingers.



6 Rub your thumbs and the ends of your wrists.



7 Rinse both hands properly with water.



LINE Ramathibodi



อ. พญ.รพีพรรณ รัตนวงศ์นรา มอร์ด
สาขาวิชาโรคติดเชื้อ ภาควิชาอายุรศาสตร์
คณะแพทยศาสตร์โรงพยาบาลรามาธิบดี มหาวิทยาลัยมหิดล
<https://med.mahidol.ac.th/infographics>

TH10-A-01-0005740-001



ไทยชนะ

วิทยาลัยดุริยางคศิลป์ มหาวิทยาลัยมหิดล

ประเภท โรงเรียน หรือสถาบันการศึกษา



ผ่านการประเมินตนเองตามมาตรการควบคุมหลัก

สำหรับผู้ให้บริการสถานที่เพื่อเปิดรับเข้าร้าน หรือเปิดให้บริการ และประเมินสุขภาพตนเอง

วันที่ 19/6/2563

www.ไทยชนะ.com



5 STEPS FOR SAFETY

Coming to the College of Music, Mahidol University



1 SCAN QR CODE



2 TEMPERATURE CHECK



3 WEAR MASK



4 WASH HAND WITH SOAP OR ALCOHOL GEL

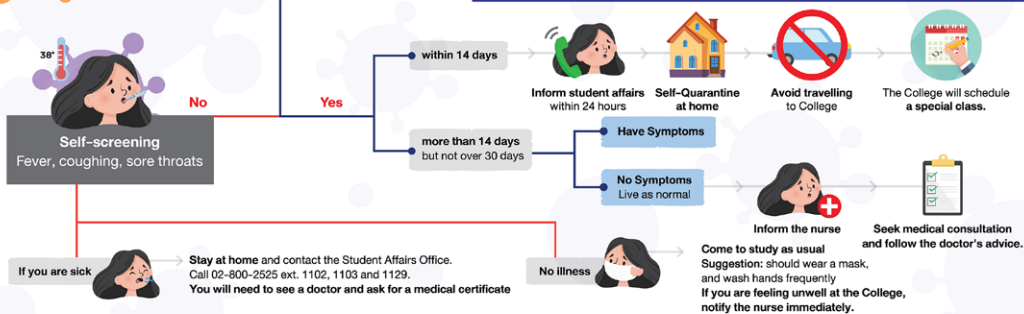


5 SOCIAL DISTANCING AT LEAST 1-2 METERS FROM EACH OTHER



Students who have travelled to or transited through the countries/territories/areas* being reported as Disease Infected Zones/Countries

SUGGESTIONS FOR STUDENTS IN ATTENDING CLASSES





จุด
คัดกรอง

CHECKPOINT





RESPECT DISTANCING

จำกัดจำนวนคน
ไม่เกิน__คน
เพื่อความปลอดภัยของทุกคน

Limit the number of people
entering at once



ไทยชนะ

วิทยาลัยดุริยางคศิลป์ มหาวิทยาลัยมหิดล

ประเภท โรงเรียน หรือสถานประกอบการ



ผ่านการประเมินตนเองตามมาตรการควบคุมหลัก

สำหรับผู้ให้บริการสแกนเพื่อเช็คอินเข้าร้าน หรือเช็คเอาท์หลังใช้บริการ และประเมินสุขภาพ

วันที่ 19/6/2563

www.ไทยชนะ.com



5 STEPS FOR SAFETY

Coming to the College of Music, Mahidol University



1 SCAN QR CODE



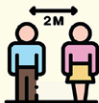
2 TEMPERATURE CHECK



3 WEAR MASK



4 WASH HAND WITH SOAP OR ALCOHOL GEL

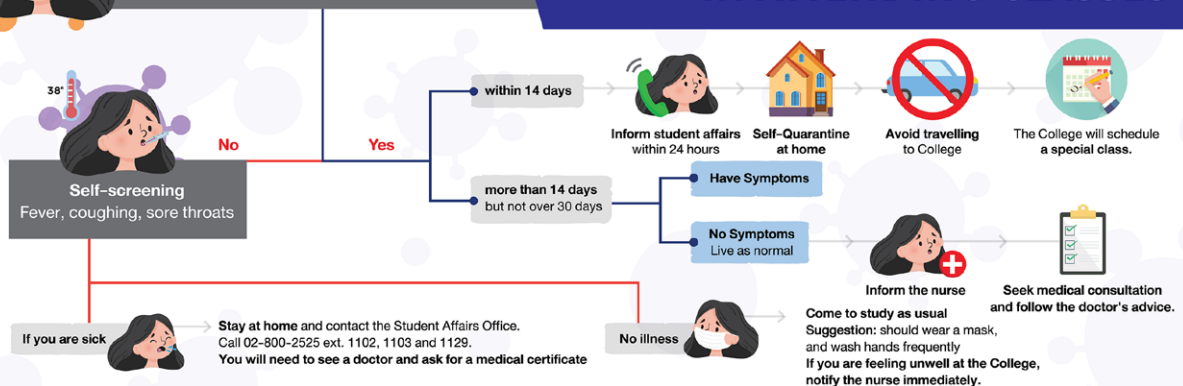


5 SOCIAL DISTANCING AT LEAST 1-2 METERS FROM EACH OTHER



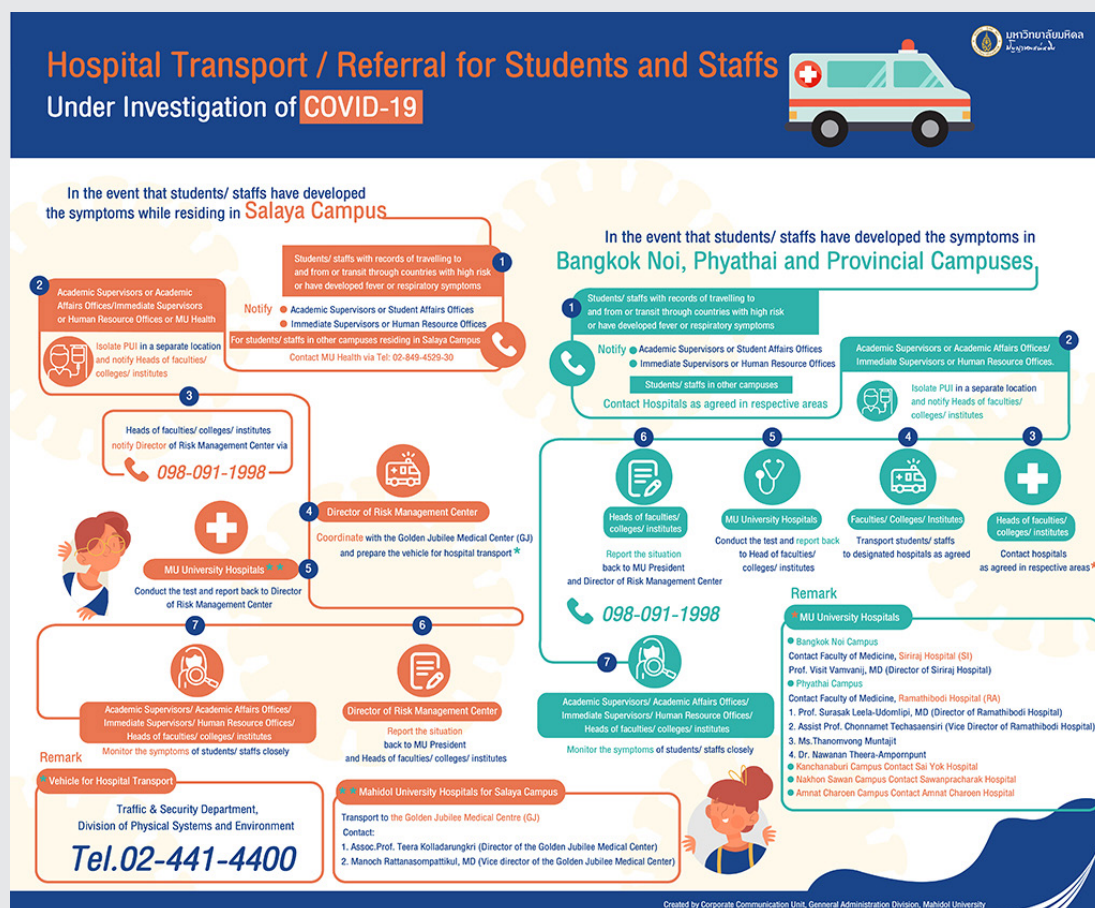
Students who have travelled to or transited through the countries/territories/areas* being reported as Disease Infected Zones/Countries

SUGGESTIONS FOR STUDENTS IN ATTENDING CLASSES



If unwell at home or at College (Faculty and staff – YAMP students see more information below)

- Inform your supervisor and if any of the symptoms for COVID-19 we will follow MU system
- Recommendations for Individuals with through Self-Quarantine at Home
- Ask for leave and self-quarantine at home for 14 days after having a close contact with patients with confirmed case
- Isolate yourself through the use of separate space/bedroom,
- Avoid outgoing activities and other public gatherings
- Eat at a different place and time from other family members
- Do not share personal belongings such as handkerchiefs, towels, cups or straws with others
- When coughing, be advised to
 - o Attire a face mask or cover your mouth and chin with a tissue paper, dispose the used napkin in a plastic bag before trashing it in a bin, or cough or sneeze into your upper sleeve, not your hands and sanitizing your hands with alcohol sanitizer or clean your hands with soap and water



Created by Corporate Communication Unit, General Administration Division, Mahidul University

B3. Students Arriving on 26 June

We request M4 arrive between 0800 -0900, M5 0900-1000, M6 1000-1100, in order to facilitate traffic flow, although Ramathibodi will start saliva testing at 1000 and should be finished by 1130.

Step 1: We would request parents to drop off students at the front entrance and we will have our team to help move belongings into storage areas on the 1st floor.

Step 2: Students will sit at socially distanced at our “new normal” seating arrangements at our 1st floor (no more than 3 people at a table)

Step 3: Testing times are roughly:

1000 M4 and Student Council Executive

1030 M5

1100 M6

Step 4: After testing schedule (Mixture of COVID-19 learning, Back to school mental health checking and Freshy

	Room	Morning session	Lunch	Afternoon	Dinner	Evening
M4	304	10.30-11.30	11.30	12.00 -16.30	16.30	17.00-19.30
M5	807	11.00-12.00	12.00	12.30–17.00	17.00	17.30-20.00
M6	607	11.30-12.30	12.30	13.00 -17.30	17.30	18.00-20.30

Step 5: Test results returned around 1930 – 2000

M4 return to 1st floor and check in starting around 1930

M5 return to 1st floor and check in starting around 2000

M6 return to 1st floor and check in starting around 2030

Section C:

Teaching and Learning Guidelines

When moving around school, please walk on the LEFT. Use the middle stairs as much as possible, as the lifts are limited to 5 people a time. One side of stairs is UP and another down.

We are not putting “stand here” or “do this” everywhere in the building. Everyone should understand why it is important to social distance, wash hands, wear a mask and don’t share

C1: Guidelines for Classrooms

1. Check everyone is wearing a mask and has washed their hands before entering the room.
2. Every room will be set up for social distancing. Please do not move any desks or chairs.
3. Do not stand closer than 1.5 m to any student at any time. Next to the teacher’s desk in classrooms there should be chair and/or table for students to sit and for you to mark or give feedback on their work if needed one to one, during the class.
4. When students leave a room, please do so a few at a time to avoid too many students using the doors at any one time.
5. Student waiting outside should be 1.5 m apart or if they see the place outside is already full, wait nearby and enter when the doors are clear.
6. After every class, everyone should wash their hand using their own hand gel or using the rest rooms. (Being careful to observe social distancing inside and outside)

C2. Guideline for Practicing, Ensemble Class or Rehearsal

1. Group limited:
 - a. A maximum of 9 people for small ensemble.
 - b. A maximum of large ensemble will be announced later.
2. Large room is recommended for lesson/rehearsal.
3. Each room will have clearly posted before entering the number of people allowed in that room and will be set up for the maximum allowed and chairs marked in squares where they may be placed. Please do not try to add anymore chairs than have squares marked.
4. 1.5 meter distance must be maintained at all time.
5. Distance recommended for rehearsal (*according to the Berlin protocol)
 - a. String/ Keyboard/ Harp/ Guitar/ Percussion/Thai: 1.5 meter
 - b. Winds/ Brass: 2 meters
 - c. Voice: 3-4 meters inside, 2-3 meters outside
6. Students are required to use ONLY your personal stuff during rehearsal. (pencil, eraser, metronome, music score, etc.)
7. A separate music stand is required for each musician.
8. Prepare your personal protection equipment (mask, face shield, hand gel, etc.)
9. Always washing hands before and after lesson.
10. For ensemble, recommend for musicians to be seated in parallel lines or wide arcs to avoid directly facing each other while playing.
11. Do not talk to during the rehearsal to avoid air drop in the room.
12. Opening windows for added ventilation is also recommended during rehearsal for woodwind, brass and voice.

C3: Specific Instrument Protective Guidelines

1. String
 - a. A separate music stand is required for each musician.
 - b. always wear protective mask or face shield.
2. Winds and Brass
 - a. Prepare your own hygiene items for cleaning water.
 - b. Dripping or tipping water on the floor is not allowed for brass, must prepare your personal vessel for liquid.
 - c. If you have to borrow instrument from college, please make sure that instrument should not be used for 72 hours before.
 - d. The floor of the wind and brass work area should be cleaned after every rehearsal and performance.
 - e. Setting up plexiglass walls for winds and brass if sitting behind other player.
3. Percussion & Drum Set
 - a. Always wear protective mask and gloves.
 - b. Required to use only your personal stuff as following
 - c. Sticks and mallets
 - d. Accessories: triangle, tambourine, etc.
 - e. Practice pad
4. Keyboard
 - a. Always wear protective mask.
 - b. Always disinfect touching surfaces before and after each lesson.
 - c. Sitting on same piano is not allowed for two pianos repertoires according to social distancing requirement.

C4: Hybrid Learning for Keyboard only

COLLEGE OF MUSIC, MAHIDOL UNIVERSITY

The Semi-Online Keyboard Class



The semi-online keyboard class is a combination of in-person and online class settings. The goals are to improve the learning proficiency and teaching quality. Students will learn at their own pace. They can skip to the next chapter or repeat the lesson, without the limitation from the class time. We split the semester into four sets of 3-week lesson cycles, with a final project. Each cycle contains teaching videos, screen presentations, and other types of materials. The students learn independently with assistance from the teachers, and extra help for students with special needs. Our priority is to deliver a flexible and practical learning experience.

The 3-Week Lesson Cycle

Week 1

ONLINE STUDY

All learning materials are available on Microsoft Teams

Week 2

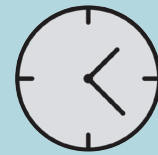
IN-PERSON CLASS

Come to the class and play for the teacher

Week 3

RECORD

Record, submit the homework, and receive feedback.



Anywhere/anytime

Study independently from the online materials, and meet the teachers before recording the homework.



Social-Distancing

Stay safe from the crowded rooms, while studying hard!



Intimidation-Free

Record the homework when you are ready, and be able to re-record to reach your best.

Contact us

tharach.wut@mahidol.ac.th

C5: Choir Guidelines

C5.1. Guideline for rehearsal

Topics	Suggestions
Room/ Venue	<ul style="list-style-type: none"> - Outdoor Large room with regular ventilation and high ceiling - Fans in the rehearsal room are not recommended if they are transporting air at low speed (less than 0.3 m / s) from person to person.
Rehearsal Time	Referred to 2. <i>Class structure</i>
Distancing and Seating	<p>3-4 meters (indoor) 2-3 meters (outdoor)</p> <p>* Study in the Institute of Musical Medicine in Freiburg, based on a study done with the Bamberger Symphoniker Orchestra and Choir recommending a distance of 2 m between singers (<i>however the transmission of the virus through aerosols is not well enough researched so far</i>)</p> <p>* Research by the Institute of Aerodynamics of the University of the Bundeswehr in Munich recommends a distance of 1.5 metres.</p> <p>Classroom setting: face forward formation, NO circle formation</p>
Group limitation	<p>According to the space available to the room with the regard to the distancing and seating guidance mentioned above</p> <p>More information referred to 2.2 , 2.5</p>
Protective guidelines	<p>Students must prepare personal protection equipment:</p> <ul style="list-style-type: none"> - Face shield is to be worn throughout the rehearsal period. - While singing, a face mask is optional, however, while not singing it must be worn at all times. - Hand gel: hand must be washed before and after the lesson <p>No contact policy:</p> <ul style="list-style-type: none"> - Not to contact with hands or contacts via surfaces (e.g. through passing on notes, sharing equipment etc.) - Students may use the tablets instead of paper music notes. Students who do not use tablets will inform the instructor to prepare the separate copy for each student. <p>Repertoire:</p> <ul style="list-style-type: none"> - Works selected for study in this semester are the works that focus more on the vowel, humm, for example, the latin text, rather than consonance (ch, sh, s, c, etc.) that has more risk for spreading the particle. - The repertoire for this semester will consist of four works: three pieces selected by the instructor and one group project selection

C5.2. Choir Teaching and Learning Activities

2.1 Online Lesson

- An online teaching consists of a warm-up period of vocalizations and scales and exercises to strengthen voice production and position, followed by rehearsal of music.
- Each piece of repertoire will be purposely chosen to develop concepts/ skills in the areas of vocal production, musicianship, aesthetics and music history.
- Students are supposed to turn off the microphone during the online teaching. The instructor will give a lecture regarding musical information of the music and demonstrate each vocal line. Students might be asked to turn on the microphone and sing back to the instructor. The other music to be studied in this semester will be introduced in the online teaching as well.

2.2 On-site lesson

- Students will be formed in a group in accordance with their vocal part assigned by the instructor.
- Each group is required to attend in order to strengthen and improve the individual vocal quality, precise intonation, music reading and overall musicianship. Each group will have 30-40 minutes weekly to meet the instructor.
- Students will be notified of the time of their sectional meeting by an announcement placed on the google classroom after the online teaching is done.

2.3 Self-video recording assignment

- Students will be asked to submit video recordings of the music which the instructor assign in the online teaching not later than 5 days after the sectional teaching.
- The video image must show the student while singing and the front side of their face, filmed with one camera without cuts during singing.
- All parts will be provided with a practice track through the Google Classroom

2.4 Self Evaluation Form

- At the end of each month, students will fill out their self evaluation form which they will reflect on their experience in the choir. They can also discuss their strong point and the challenges they are facing during the rehearsals so that the instructor can provide the feedback and use the information to adjust the rehearsal to meet the challenges of the students.

2.5 Small Group Teaching and Group Project

- Students are divided into smaller groups (8-10 people each) in mixed formation in order to develop vertical listening skill.
- Students will be notified of the time of their sectional meeting by an announcement placed on the Google Classroom after the online teaching is done.
- In case extra rehearsals are needed, students will be informed of the schedule for extra rehearsals in advance. Students need to make themselves available for extra rehearsals
- Group project goal: Students will collaborate to create a performance on the music of their choice (within the guidelines) to be published online at the end of the semester.
- Each week students will be assigned with tasks to perform in order to accomplish the goal. Such tasks will be discussed and submitted through the Google Classroom (GC) platform. Each task will be evaluated and given feedback by the instructor.

SectionD:

Room Guidance COVID-19 Social Distancing

D1. Practice rooms

Practice Room and Small Ensemble Planning

Instrument	Choices							Remark
	2nd fl.	3rd fl.	4th fl.	5th fl.	PC608	Bedroom	Outside area	
Voice		304/306			Yes			08:00-17:00
		304/30630 3/305307/309			No			17:00-21:00 (For private and Practice. Aj. Pae will schedule)
Wind		Yes					Yes	
Brass		Yes					Yes	
Strings		Yes		Yes		Yes		
Guitar		Yes		Yes		Yes		
E. Guitars		Yes		Yes		Yes		
Piano (cl.)		Yes	Yes	Yes				Use 3 rd floor or 4 th or PC807 for small ensemble
Piano (Jazz)	PC212		Yes	Yes				Use 2 nd or 3 rd floor for small ensemble
Thai	PC210			Yes		Yes		
Drumset	PC 210 /212			Yes				May use 210 after 1700

D2. Borrowing instruments

1. In case where the student needs to use instrument which he/she does not own, the borrowing system is in place.

2. For borrowing wind instruments, the borrowing will be done on a semester basis with contract.

3. We recommend that student uses his/her own instrument, if possible.

Room	Area (Sqm.)	Max. PPL	Sqm./pp	Objectives	Remark
PC807	261	36	7.25	Orchestra/Band/Ensemble	2 grand pianos
PC607	261	37	7.05	Orchestra/Band/ Ensemble	1 grand piano
PC608	209.28	13*	16.07	Choir and Voice Only	1 grand piano
PC304	144	25	5.76	Ensemble/ Voice/ Solo with piano accom.	upright piano
PC210	117	20	5.85	Thai/Jazz/Ensemble	upright piano/ drumset
PC212	117	20	5.85	Jazz/ Ensemble/ String Combo	grand piano/ drumset
Classroom3rd fl. (Music)	70.56	14	5.04	Ensemble/ Jazz/ Voice Private Lesson/ Solo with accom/ etc.	
PC 407 & 408	32.40	6	5.4	Studio Class/ Ensemble/ Meeting	*only if needed
Faculty Studio	11.55	3	3.85	Private Lesson/ Ensemble only for small instrument/	Allocated rooms for two pianos.
PC 506.01	13.77	2	6.8	Drumset Lesson	Two Drumsets
PC506.16	14.21	2	7.1	Piano Lesson/Rehearsal	Two Pianos

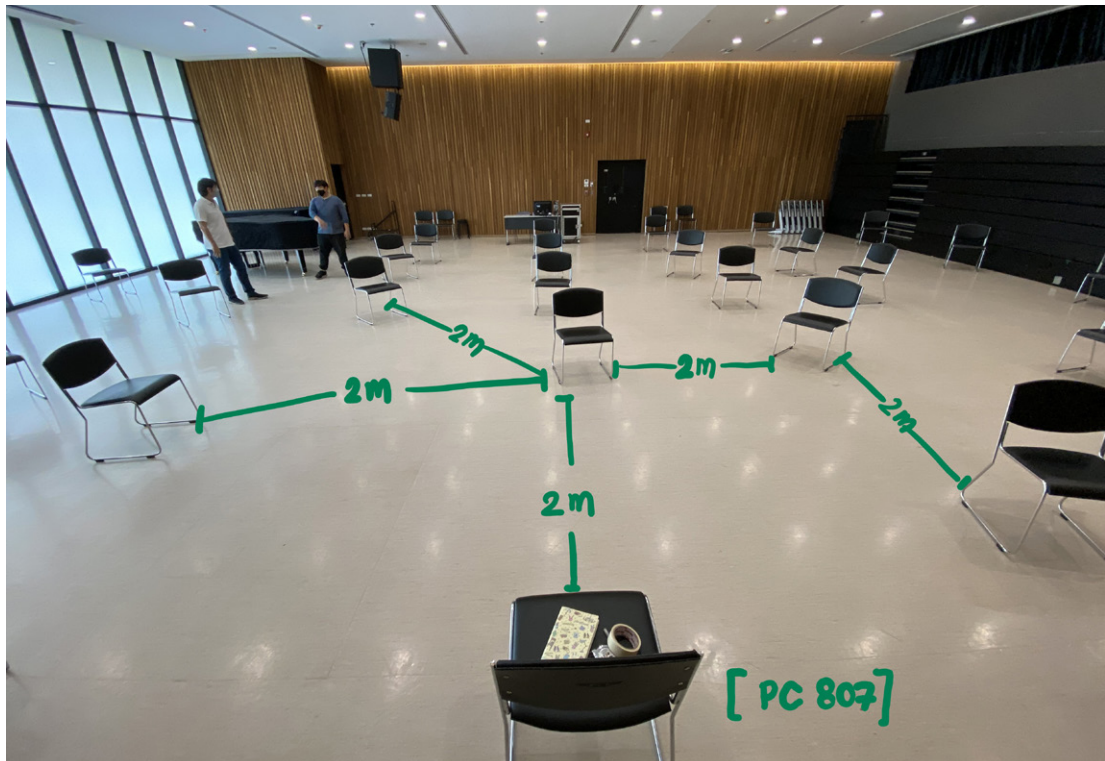
*All rooms have been calculated with 2 meter distancing or approx. 4 square meter/person except PC608, which calculate with 4 meter distancing.

D3. Classroom for Private Lesson & Small Ensemble

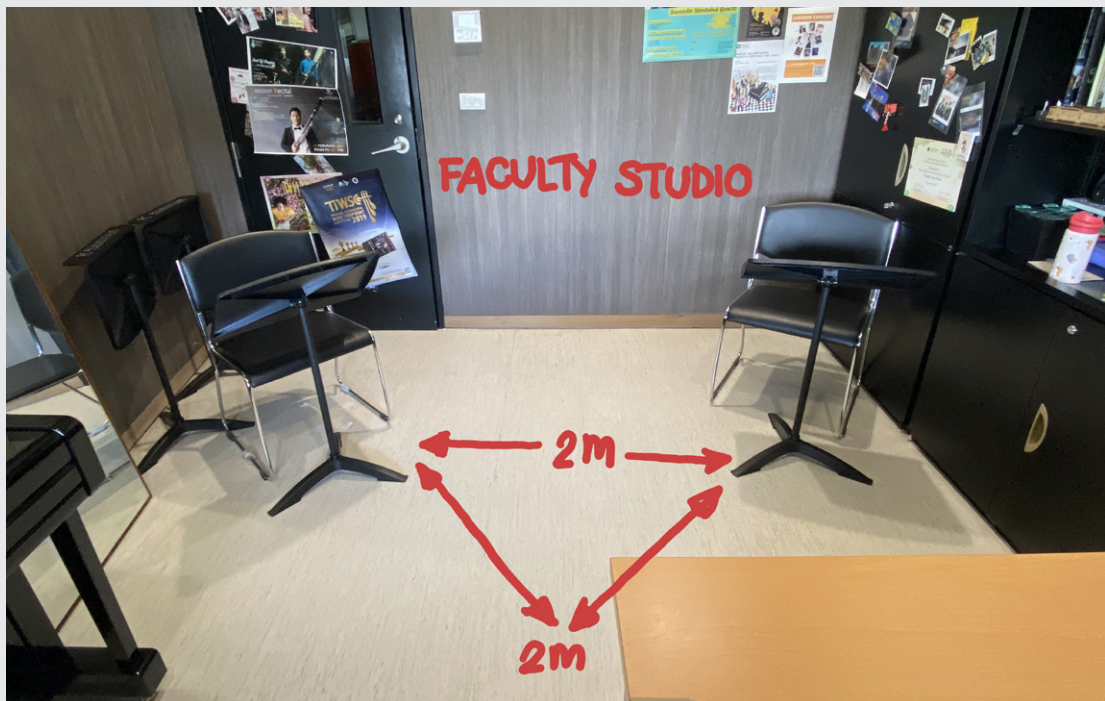
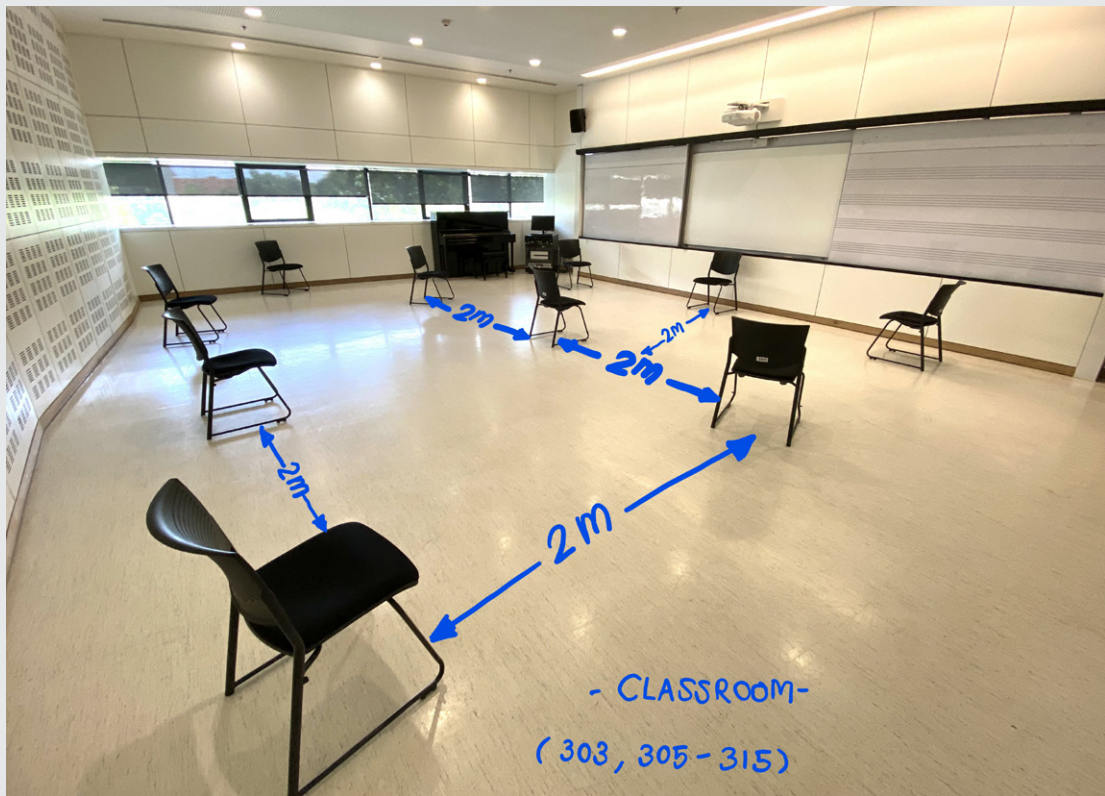
Instrument	Choices		Rooms available for Private	Remarks
	In person at studio	In person in bigger room/ outdoor		
Voice		Yes	PC 608, PC 304	Apply for small ensem.
Wind	Yes	Yes	4th fl., 5th fl., Teacher's Studio	Use 3rd fl. for small.
Brass	Yes	Yes	4th fl., 5th fl., Teacher's Studio	Use 3rd fl. for small.
Strings	Yes		Teacher's Studio	Use 3rd fl. for small.
Guitar	Yes		Teacher's Studio	Use 3rd fl. for small.
E. Guitars	Yes		Teacher's Studio	Use 3rd fl. for small.
Piano (cl.)	Yes		Teacher's Studio	Use 3rd fl. for small, Small m. 4 in PC807.
Piano (Jazz)	Yes		Teacher's Studio, PC212	Use 3rd fl. for small.
Thai	Yes		Teacher's Studio, Practice Rooms, PC210	Use PC210 for small ensem.
Drumset	Yes		Teacher's Studio, Practice Rooms, 3th fl. (will allocated)	Use 3rd fl. for small.

*For Faculty who need rooms to teach at PC, we do have spare teacher's studios and practice rooms.

D4. Example of Setting:







D5: Borrowing instruments

1. In case where the student needs to use instrument which he/she does not own, the borrowing system is in place.
2. For borrowing wind instruments, the borrowing will be done on a semester basis with contract.
3. We recommend that student uses his/her own instrument, if possible.

Section E:

Catering

Catering Outlets and Areas

1. All tables are marked to maintain social distancing
2. Please queue maintaining 1.5 apart. If the queue is too full wait at a safe distance nearby, before joining the queue.
3. The canteen staff will give you your crockery and cutlery as you must never share.
4. Wash your hand before taking off your mask, after you take off your mask before eating and again after eating and before you put on your mask. (Do not leave used masks on any surfaces)

Section F:

Boarding Life (See Boarding Handbook)